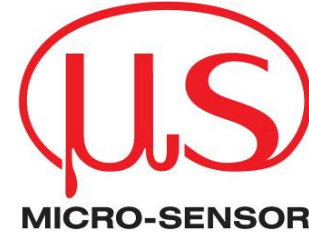




motionSENSOR Options Cable Set and Assembling Set



- Cable Set and Assembly Set to connect sensors and switches of BG, NS, LG and NG Series
- shielded version available

Article Number 3-Pin	Article Number 4-Pin	Shield	Length	Tension Relief
6503.01-5.01	6503.02-5.01	no	1m (3.28ft)	no
6503.01-5.02	6503.02-5.02	no	4m (13.12ft)	no
6503.01-5.03	6503.02-5.03	no	10m (32.8ft)	no
6503.01-5.04	6503.02-5.04	no	20m (65.6ft)	no
6503.01-5.11	6503.02-5.11	no	1m (3.28ft)	yes
6503.01-5.12	6503.02-5.12	no	4m (13.12ft)	yes
6503.01-5.13	6503.02-5.13	no	10m (32.8ft)	yes
6503.01-5.14	6503.02-5.14	no	20m (65.6ft)	yes
6503.01-5.05	6503.02-5.05	yes	1m (3.28ft)	no
6503.01-5.06	6503.02-5.06	yes	4m (13.12ft)	no
6503.01-5.07	6503.02-5.07	yes	10m (32.8ft)	no
6503.01-5.08	6503.02-5.08	yes	20m (65.6ft)	no
6503.01-5.15	6503.02-5.15	yes	1m (3.28ft)	yes
6503.01-5.16	6503.02-5.16	yes	4m (13.12ft)	yes
6503.01-5.17	6503.02-5.17	yes	10m (32.8ft)	yes
6503.01-5.18	6503.02-5.18	yes	20m (65.6ft)	yes
Article Number	Assembling Set			
6280.01-3.01	Assembly Set for BG, NS, LG and NG Series			



We reserve to make technical alterations without prior notice.

Designation and Ordering Information

Cable Set [] [] [] []

- without Tension Relief [] / [with Tension Relief]
- unshielded [] / [shielded]
- [1m] / [4m] / [10m] / [20m]
- [3-pin] / [4-pin]

Cable and Plug

LIYY 3x1.0 (3-Pin)
LIYY 4x1.0 (4-Pin)

AMP Superseal 1.5

Application Notes

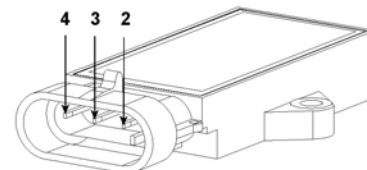
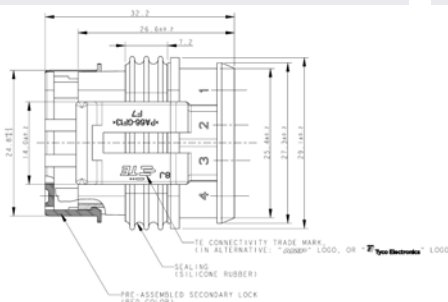
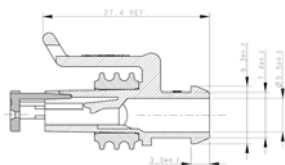
- don't use long cables without shield for Voltage Output (EMI)
- at shielded Cable please put the far End of Cable to Ground
- Cables may be shorted

Parameters of Cable Set

- open End (prestripped)
- Seal IP67

Parameters of Assembly Set

- Two Screws M4x25
- Nuts and Slices



Source of Drawing of Plug:
TE Drawing AMP Superseal 1.5 SRS
Drawing Number: C-282088