



Electro Optical Components, Inc.

5460 Skylane Boulevard, Santa Rosa, CA 95403

Toll Free: 855-EOC-6300

www.eoc-inc.com | info@eoc-inc.com



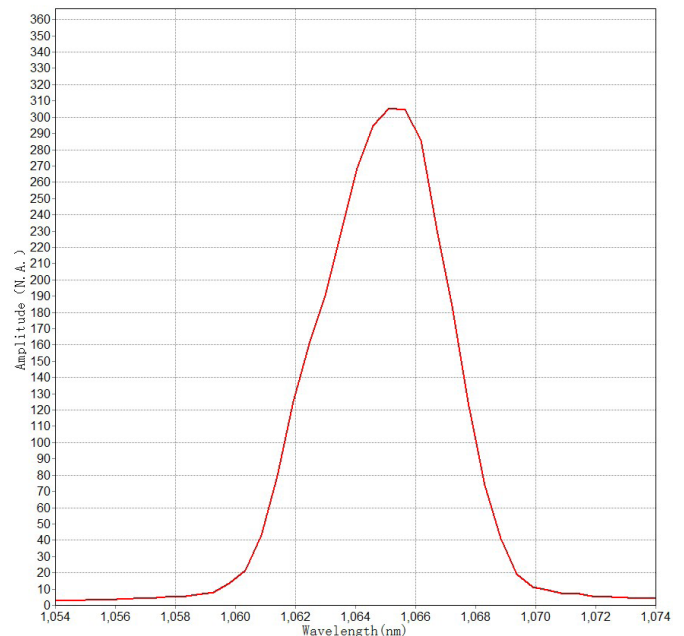
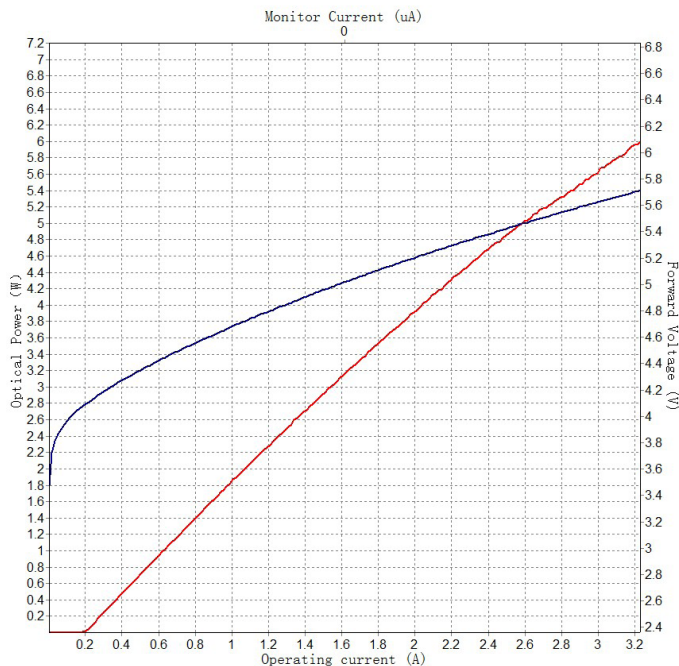
1064nm 6W Laser Diode Module

R1064±3-6WD-R4-PFS



Feature
Output power: 6W
Wavelength: 1064±3nm
Fiber core: 200 μm, 0.22 NA
Application
Medical use
Material processing

1064nm 6W Characteristics (25°C)



Typical Device Performance(25°C)

Parameter		Symbol	Typical Value	Unit
			R1064±3-6WD-R4-PFS	
Optical	CW Output Power	P_{op}	6	W
	Center Wavelength	λ_c	1064±3	nm
	Spectral Width	$\Delta\lambda$	<6	nm
	Temperature drift of wavelength	$\Delta\lambda / \Delta T$	0.3	nm/°C
Aiming Beam	Output Power	P_a	2	mW
	Wavelength	λ_a	650±10	nm
	Voltage	V_a	2.2,5.0	V
Electrical	Threshold Current	I_{th}	0.23	A
	Operating Current	I_{op}	3.2	A
	Operating Voltage	V_{op}	5.7	V
	Slope Efficiency	η_{es}	2.0	W/A
	PD current	I_{PD}	<3000	μA
	Thermistor	R_t	10±5%/3450	kΩ/β(25°C)
Fiber	Fiber Core Diameter	d_{core}	200	μm
	Connector	-	SMA905	-

Other Parameters

Parameter	Operating Temperature /°C	Operating Relative Humidity /%	Storage Temperature /°C	Storage Relative Humidity /%	Lead Soldering Temperature(max/°C)
Min	10	-	-20	-	-
Max	30	75	70	90	250(10Sec.)

Package Dimensions (mm)

Pin	Function
1	Laser (+)
2	Laser (-)
3	FCD LED (-)
4	FCD LED (+); FCD PD(N)
5	FCD PD(P)
6	Aiming Beam LD(+);[DC]; PD(N)
7	Aiming Beam LD(-);[GND]
8	PD(P)
9	Thermistor
10	Thermistor

