



Electro Optical Components, Inc.

5460 Skylane Boulevard, Santa Rosa, CA 95403

Toll Free: 855-EOC-6300

www.eoc-inc.com | info@eoc-inc.com



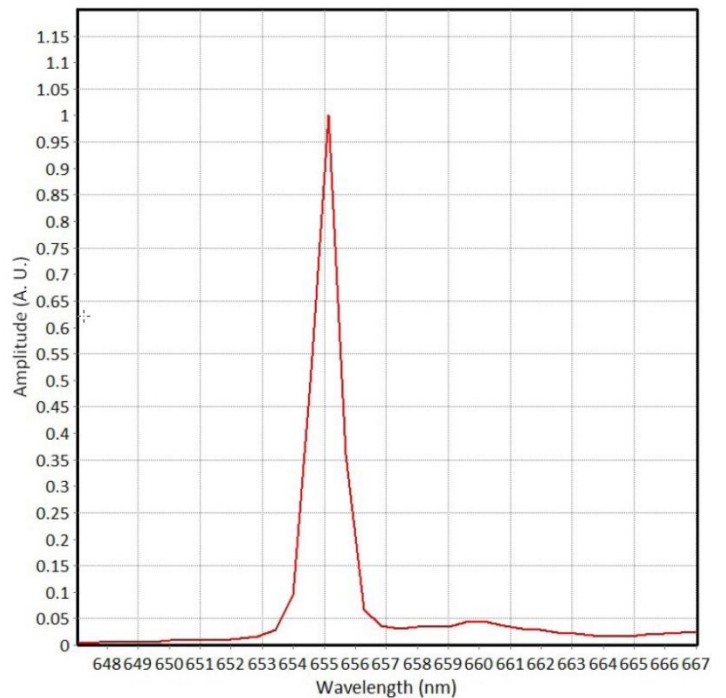
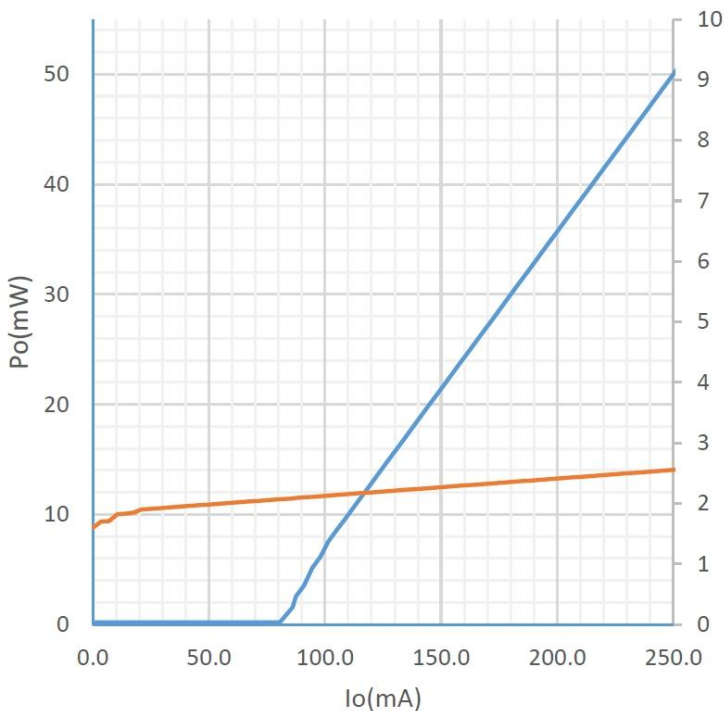
660nm 50mW Laser Diode Module

R660±10-50mWF-03BCK-S



Feature
Output power: 50mW
Wavelength: 660±10nm
Fiber core: 4µm, 0.13NA
Application
Medical use
Pilot light
Holography

660nm 50mW Characteristics (25°C)



Typical Device Performance(25°C)

Parameter		Symbol	Typical Value	Unit
			R660±10-50mWF-03BCK-S	
Optical	CW Output Power	Pop	50	mW
	Center Wavelength	λ_c	660±10	nm
	Spectral Width	$\Delta\lambda$	≤3	nm
	Temperature drift of wavelength	$\Delta\lambda/\Delta T$	0.2	nm/°C
Electrical	Threshold Current	I _{th}	85	mA
	Operating Current	I _{op}	250	mA
	Operating Voltage	V _{op}	2.3	V
	Slope Efficiency	η_{es}	0.3	W/A
Fiber	Fiber Core Diameter	d _{core}	4	μm
	Fiber Clad Diameter	d _{clad}	125	μm
	Fiber Buffer Diameter	d _{buffer}	250	μm
	Numerical Aperture	NA	0.13	-
	Connector	-	FC/PC,ST,SMA905	-

Other Parameters

Parameter	Operating Temperature /°C	Operating Relative Humidity /%	Storage Temperature /°C	Storage Relative Humidity /%	Lead Soldering Temperature (max/°C)
Min	10	-	-20	-	-
Max	30	75	70	90	250(10Sec.)

Package Dimensions (mm)

Pin	Function
1	Laser(+)
2	Laser(-)
3	None

