



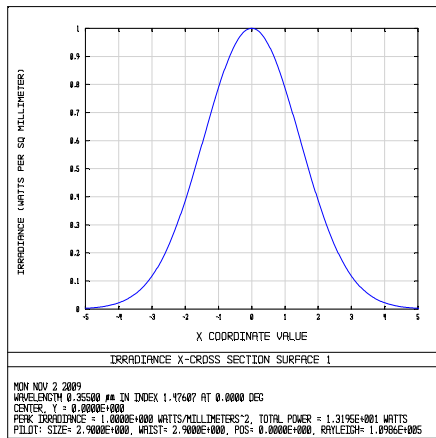
## Beam Shaper-355nm-6-W600 (BS-355-6-W600)

Beam shaper is our latest developed item from Wavelength Technology. The beam shaper is functioned to change the Gaussian profile of a light source (commonly laser) to become a Top-Hat profile with nearly 100% efficiency. This BS-355-6-W600 is developed to have a longer working distance up to 600mm. Detailed specifications are as below.

### Specification:

Applicable Input Beam Size (mm)	Output Beam Size (mm)	Max. outer Dia (mm)	Total Length (mm)	Working Distance (mm)
5.8-6	5-5.5	30	160.5	100-600

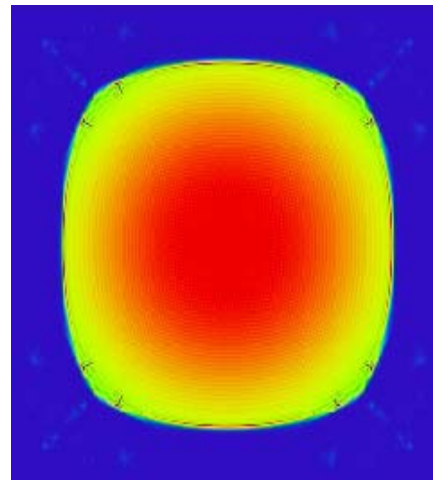
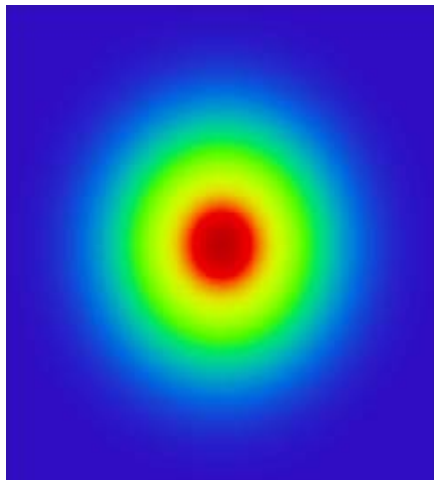
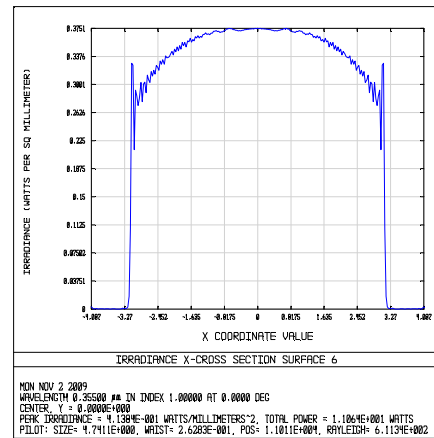
Input Gaussian beam profile



BS-355-6-W600

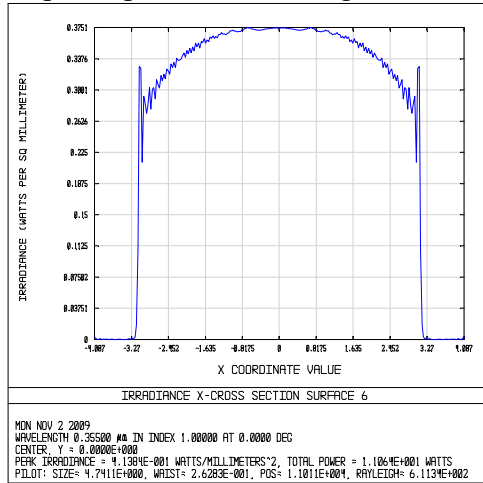


Output Top-Hat Profile

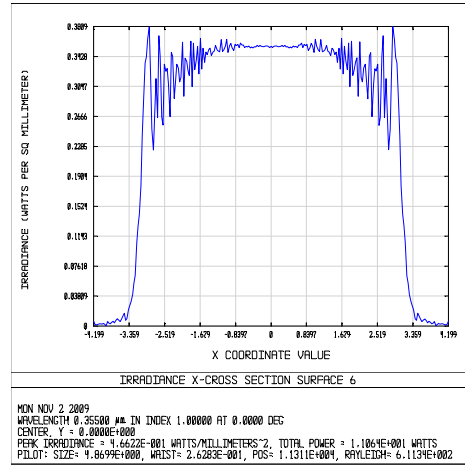




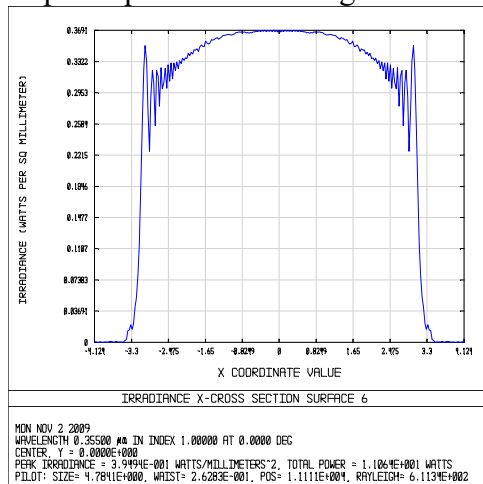
Top-Hat profile at working distance 100mm



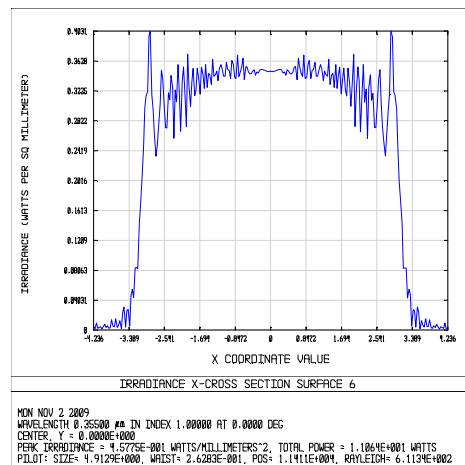
Top-Hat profile at working distance 400mm



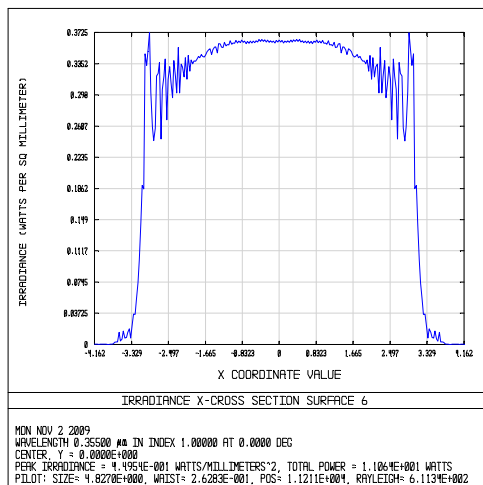
Top-Hat profile at working distance 200mm



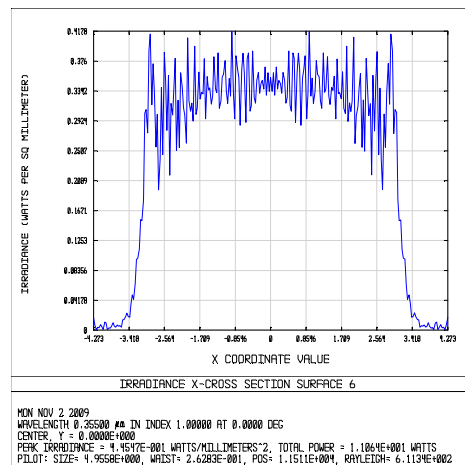
Top-Hat profile at working distance 500mm



Top-Hat profile at working distance 300mm



Top-Hat profile at working distance 600mm





**Mechanical Layout:**

