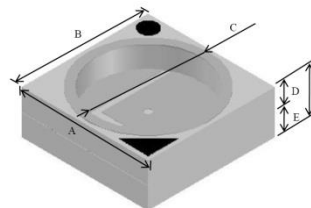
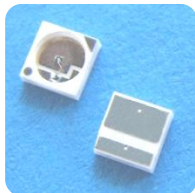




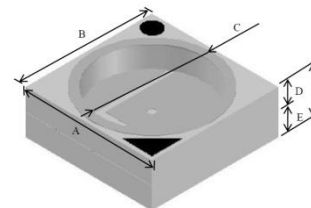
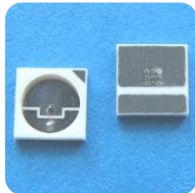
LIGHT EMITTING DIODES Packages

CS3
3x3 mm



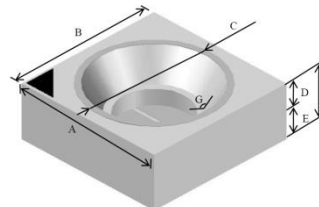
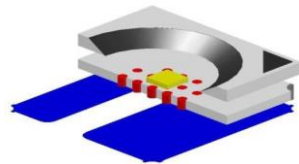
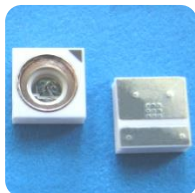
ITEM	Symbol	Rule
Basic Outline	A	3.0± 0.1mm
Basic Outline	B	3.0± 0.1mm
Cavity size	C	Max 2.4Φ
Top layer	D	Min 0.4mm
Bottom layer	E	Min 0.4mm
Thickness	F	Max 2mm

CS5
5x5 mm



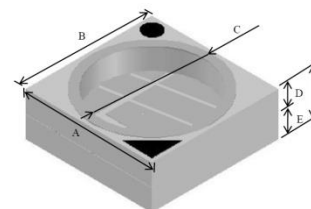
ITEM	Symbol	Rule
Basic Outline	A	5.0± 0.1mm
Basic Outline	B	5.0± 0.1mm
Cavity size	C	Max 4.2Φ
Top layer	D	Min 0.4mm
Bottom layer	E	Min 0.4mm
Thickness	F	Max 2mm

CS5R
5x5 mm



ITEM	Symbol	Rule
Basic Outline	A	5.0± 0.1mm
Basic Outline	B	5.0± 0.1mm
Cavity size	C	Max 4.2Φ
Top layer	D	Min 0.4mm
Bottom layer	E	Min 0.4mm
Thickness	F	Max 2mm
Angle	G	Customize

CS5-3M
5x5 mm



ITEM	Symbol	Rule
Basic Outline	A	5.0± 0.1mm
Basic Outline	B	5.0± 0.1mm
Cavity size	C	Max 4.2Φ
Top layer	D	Min 0.4mm
Bottom layer	E	Min 0.4mm
Thickness	F	Max 2mm

- Tiny packages for surface mounting
- Anode and cathode are led to the metalised areas on the back side of the ceramic surface
- Material – Low Temperature Co-fired Ceramic (LTCC):
 - thermal conductivity 25 W/mK
 - thermoresistance 8 °C/W
- Microreflector (for model SMD5R) provides at reduction of radiation divergence

In addition to our standard packages we are ready to offer specifically designed solutions according to our customers' needs.